



Legal Services Support – What we're hearing from **you**

**Jennifer Pink and Rob McCleave
NSBS Legal Services Support**

Why are we regulating differently?



Legal practice today

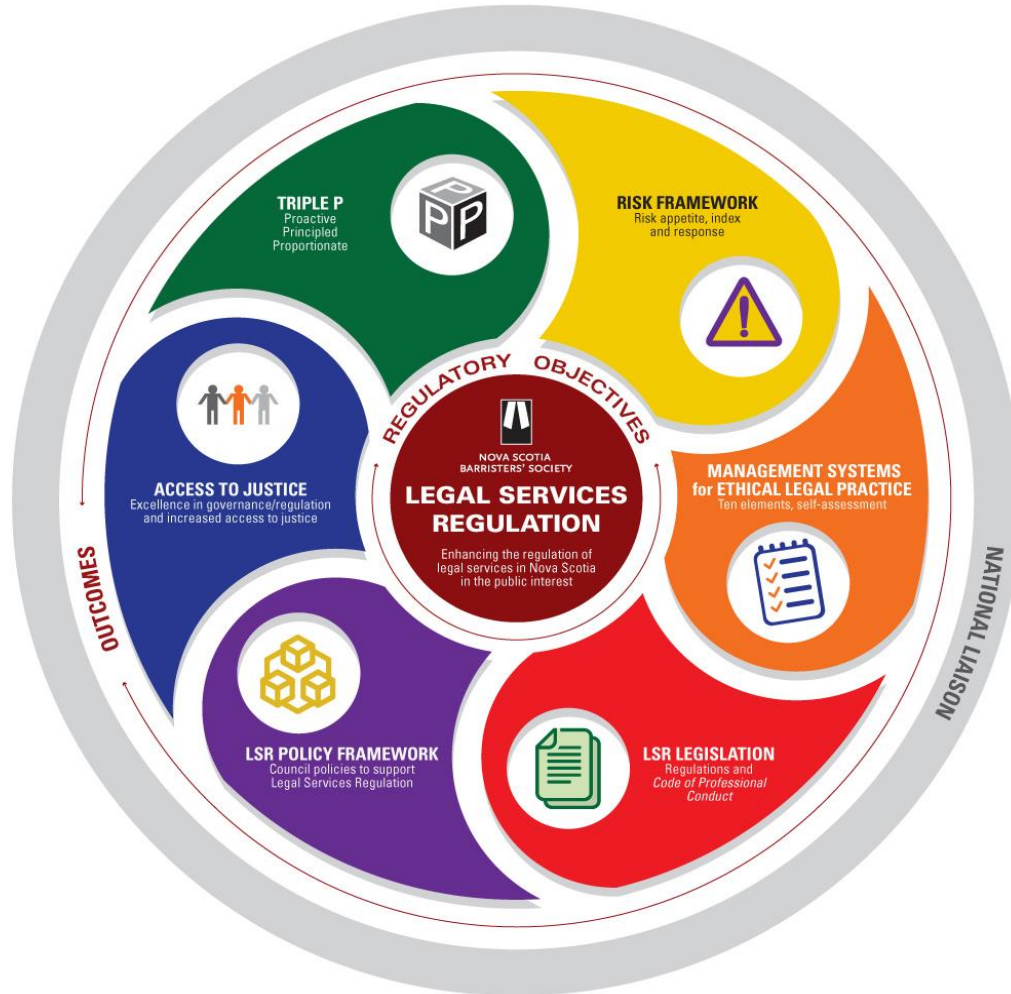


*legal*zoom®



ROCKETLAWYER®

A new regulatory model



A new approach – “Triple P”

Proactive
(not reactive)

Principled
(not prescriptive)

Proportionate
(not one size fits all)



Legal Services Support

- Answer your questions
- Listen and respond to risks in practice
- Develop shared resources
- Educate / inform



How are we doing this?

- Engaging with you early and often
 - **New Firm Registration** – engaging early
 - **MSELP Self-Assessment** - proactive support, triannual program
- Directing you to the right resources

Questions we ask ourselves

How can we...

- Ensure lawyers / firms understand their professional responsibilities?
- Regulate in a principled way within our framework?
- Offer support and education to mitigate risks?
- Assist lawyers to succeed in practice?

Questions we ask you



- What is keeping you up a night?
- What do YOU need to succeed in practice?
- When and how can the Society help you?

So, tell us

3 things the Society can do to make practice...

- easier
- better for clients
- less stressful
- more successful
- more fulfilling
- other? What is keeping you up at night?